

KARIBAN

REFERENCE : K241

SIZES : S_M_L_XL_XXL_3XL_4XL

COMPOSITION :

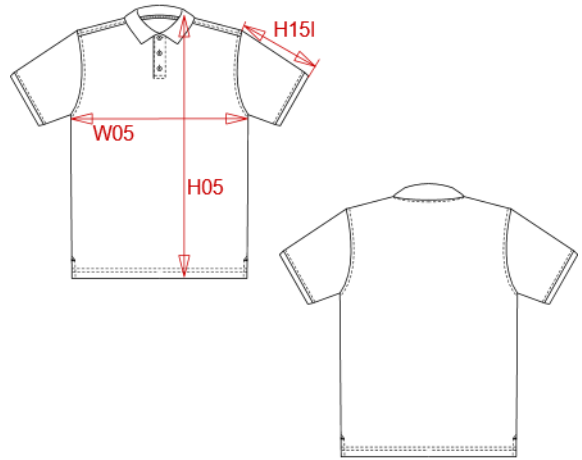
Main fabric : Combed cotton single pique - 220 100%cotton
Main fabric : Combed Cotton / Viscose single pique 90/10 - 220
90%cotton / 10%viscose

WEIGHT :

Main fabric : 220 gsm
Main fabric : 220 gsm

ARTICLE WEIGHT :

240 gr/pc



DESCRIPTION							
Français : Polo homme manches courtes							
English : Men's short sleeve pique polo shirt							
Nederlands : Heren polo met korte mouwen							
Deutsch : Herren kurzarm polo hemd pique							
Español : Polo de manga corta							
Italiano : Polo pique' uomo maniche corte							
Português : Polo pique manga curta							

MEASUREMENT							
Description	S	M	L	XL	XXL	3XL	4XL
H05 (M) Hauteur totale / Total height	70	72	74	76	78	80	82
W05 (M) 1/2 largeur poitrine / 1/2 chest width	50	53	56	59	62	65	68
H151 (M) Longueur manche avec bord côte / Sleeve length with rib	22,75	23,50	24,25	25	25,75	26,50	27,25

CARE LABEL				

PACKING	
Box	25 pcs / box S => L:54cm W:38cm H:16cm GW:6.90kg NW:5.50kg M => L:54cm W:38cm H:16cm GW:7.30kg NW:5.90kg L => L:56cm W:40cm H:16cm GW:7.80kg NW:6.30kg XL => L:56cm W:40cm H:16cm GW:8.20kg NW:6.70kg XXL => L:58cm W:42cm H:16cm GW:8.70kg NW:7.10kg 3XL => L:62cm W:44cm H:16cm GW:9.20kg NW:7.50kg 4XL => L:62cm W:44cm H:16cm GW:9.60kg NW:7.90kg

COLORS	PANTONE SERIGRAPHIE
White	White
Black	Black
Navy	433C
Red	200C
Dark grey	447C
Dark khaki	418C
Sky blue	278C
Orange	1585C
Yellow	1235C
Light royal blue	653C
Chocolate	439C
Tropical blue	7468C
Oxford grey	Based on Cool gray 7C
Kelly green	7727C
Fuchsia	7425C
Purple	7447C
Wine	504C
Lime	367C
Forest green	5605C
Light sand	482C