

# KARIBAN

**REFERENCE :** K453

**SIZES :** 6/8\_8/10\_10/12\_12/14

**COMPOSITION :**

Main fabric : Brushed Combed Cotton / Polyester fleece 80/20 - 280 80%cotton / 20%polyester

Fabric 1 : Cotton single jersey (22/1) - 180 For hood lining, neckline property tape. 100%cotton

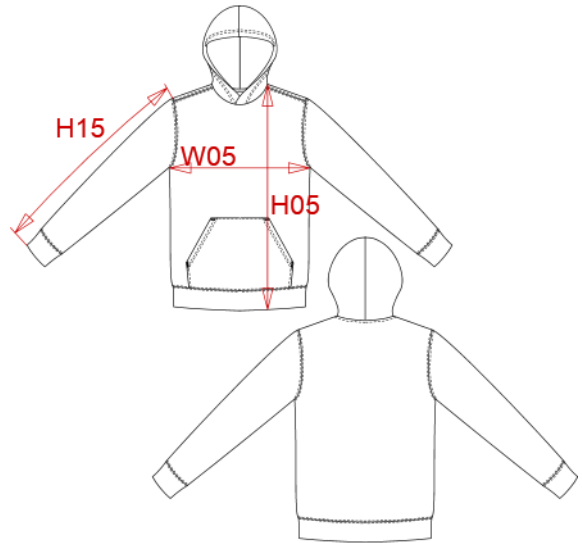
**WEIGHT :**

Main fabric : 280 gsm

Fabric 1 : 180 gsm

**ARTICLE WEIGHT :**

350 gr/pc



| DESCRIPTION   |   |       |       |       |  | COLORS                    |                          | PANTONE SERIGRAPHIE           |              |  |  |
|---|---|-------|-------|-------|--|---------------------------|--------------------------|-------------------------------|--------------|--|--|
| <b>Français :</b> Sweat-shirt capuche contrastée enfant         |   |       |       |       |  | Red / White               |                          | 200C / White                  |              |  |  |
| <b>English :</b> Kids' contrast hooded sweatshirt               |   |       |       |       |  | Black / Red               |                          | Black / 200C                  |              |  |  |
| <b>Nederlands :</b>   |   |       |       |       |  | Light kelly green / White |                          | 7482C / White                 |              |  |  |
| <b>Deutsch :</b> BICOLOR KAPUZEN SWEATSHIRT FÜR KINDER          |   |       |       |       |  | White / Fine grey         |                          | White / 877C                  |              |  |  |
| <b>Español :</b> SUDADERA CON CAPUCHA CONTRASTADA PARA NIÑO     |   |       |       |       |  | Black / Yellow            |                          | Black / 1235C                 |              |  |  |
| <b>Italiano :</b> FELPA BAMBINO CON CAPPuccio IN CONTRASTO      |   |       |       |       |  | Light royal blue / Yellow |                          | 653C / 1235C                  |              |  |  |
| <b>Português :</b> Sweatshirt de criança com capuz em contraste |   |       |       |       |  | Navy / Fine grey          |                          | 433C / 877C                   |              |  |  |
| MEASUREMENT   |   |       |       |       |  | Oxford grey / Navy        |                          | Based on Cool gray 7C / 433C  |              |  |  |
| Description   | 6/8   | 8/10  | 10/12 | 12/14 |  |                           | Navy / Red               |                               | 433C / 200C  |  |  |
| <b>H05</b> Hauteur totale avec BC / Total height with rib       | 49,50   | 54,50 | 59,50 | 64,50 |  |                           | Black / Fine grey        |                               | Black / 877C |  |  |
| <b>W05</b> 1/2 largeur poitrine / 1/2 chest width               | 39  | 42    | 45    | 48    |  |                           | Light royal blue / White |                               | 653C / White |  |  |
| <b>H15</b> Longueur manche avec BC / Sleeve length with rib     | 45,50   | 49,50 | 53,50 | 57,50 |  |                           | Fuchsia / Fine grey      |                               | 7425C / 877C |  |  |
| CARE LABEL  |   |       |       |       |  | Sky blue / White          |                          | 278C / White                  |              |  |  |
|   |   |       |       |       |  | Purple / Oxford grey      |                          | 7447C / Based on Cool gray 7C |              |  |  |
| PACKING   |   |       |       |       |  |                           |                          |                               |              |  |  |
| Box   | 20 pcs / box  |       |       |       |  |                           |                          |                               |              |  |  |
|   | 6/8-8/10 => L:58.1cm W:37.8cm H:26.7cm GW:7.00kg NW:6.00kg  |       |       |       |  |                           |                          |                               |              |  |  |
|   | 10/12-12/14 => L:58.1cm W:37.8cm H:32cm GW:8.30kg NW:7.10kg |       |       |       |  |                           |                          |                               |              |  |  |