

KARIBAN

REFERENCE : K465

SIZES : XS_S_M_L_XL_XXL

COMPOSITION :

Main fabric : Brushed Combed Cotton / Polyester fleece 80/20 - 280 80%cotton / 20%polyester

Fabric 1 : Cotton single jersey (22/1) - 180 For hood lining, neckline property tape. 100%cotton

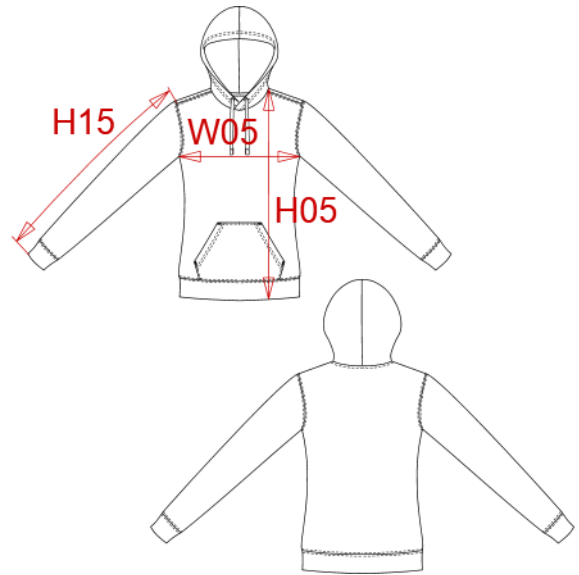
WEIGHT :

Main fabric : 280 gsm

Fabric 1 : 180 gsm

ARTICLE WEIGHT :

432 gr/pc



DESCRIPTION
Français : Sweat-shirt capuche contrastée femme
English : Ladies' contrast hooded sweatshirt
Nederlands : Damessweater met capuchon in contrasterende kleur
Deutsch : Damen-Sweatshirt mit Kapuze in Kontrastfarbe
Español : Sudadera con capucha contrastada para mujer
Italiano : Felpa donna con cappuccio a contrasto
Português : Sweatshirt de senhora com capuz em contraste

MEASUREMENT							
Description	XS	S	M	L	XL	XXL	
H05 (L) Hauteur totale / Total height	62	64	66	68	70	72	
W05 (L) 1/2 largeur poitrine à 1.5cm de l'emmanchure / 1/2 chest width at 1.5cm below armhole	45	48	51	54	57	60	
H15I (L) Longueur manche avec bord côte / Sleeve length with rib	61,50	62,50	63,50	64,50	65,50	66,50	

CARE LABEL				

PACKING	
Box	20 pcs / box XS-S => L:58.1cm W:37.8cm H:32cm GW:9.4kg NW:8.3kg M-XXL => L:58.1cm W:37.8cm H:42cm GW:10.55kg NW:9.3kg

COLORS	PANTONE SERIGRAPHIE
Red / White	200C / White
Black / Red	Black / 200C
Orange / White	1585C / White
Light kelly green / White	7482C / White
White / Fine grey	White / 877C
Black / Yellow	Black / 1235C
Dark grey / Black	432C / Black
Light royal blue / Yellow	653C / 1235C
Navy / Fine grey	433C / 877C
Oxford grey / Navy	Based on Cool gray 7C / 433C
Black / Fine grey	Black / 877C
Tropical blue / White	7468C / White
Navy / Red	433C / 200C
Sky blue / White	278C / White
Light royal blue / White	653C / White
Fuchsia / Fine grey	7425C / 877C
Purple / Oxford grey	7447C / Based on Cool gray 7C