

KARIBAN

REFERENCE : K521

SIZES : 6/8_8/10_10/12_12/14

COMPOSITION :

Main fabric : Cotton poplin - 125 100%cotton

WEIGHT :

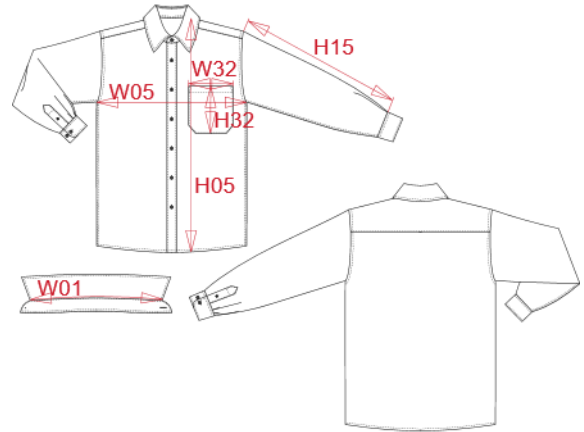
Main fabric : 125 gsm

TECHNICAL DETAIL :

Easy Care

ARTICLE WEIGHT :

145 gr/pc



DESCRIPTION	COLORS	PANTONE SERIGRAPHIE
Français : Chemise popeline manches longues enfant	White	White
English : Kid's long sleeve popeline shirt	Navy	433C
Nederlands :		
Deutsch : LANGARM POPELINEHEMD FÜR KINDER		
Español : CAMISA DE MANGA LARGA POPELINA PARA NIÑO		
Italiano : CAMICIA BAMBINO POPELINE MANICHE LUNGHE		
Português : Camisa de criança manga comprida em popeline		

MEASUREMENT						
Description	6/8	8/10	10/12	12/14		
W01 Longueur encolure / Neckline length	32,30	34	35,70	37,30		
W05 1/2 largeur poitrine / 1/2 chest width	39	42	45	48		
H15 Longueur manche sans poignet / Sleeve length without cuff	40,60	44,60	48,60	52,60		
H05 Hauteur totale dos / Back total height	53	59	64	69		
H32 Hauteur poche devant / Front pocket height	11	11,50	11,50	12		
W32 Largeur poche devant / Front pocket width	9	10	10	10,50		

CARE LABEL				

PACKING	
Box	12 pcs / box All sizes => L:52cm W:34cm H:20cm GW:4.50kg NW:2.90kg