

# KARIBAN

**REFERENCE :** K536

**SIZES :** XS\_S\_M\_L\_XL\_XXL\_3XL\_4XL

**COMPOSITION :**

Main fabric : Cotton / Polyester oxford 70/30 - 125 For white color 70%cotton / 30%polyester

Main fabric : Cotton / Polyester oxford 70/30 - 140 For colors 70%cotton / 30%polyester

**WEIGHT :**

Main fabric : 125 gsm

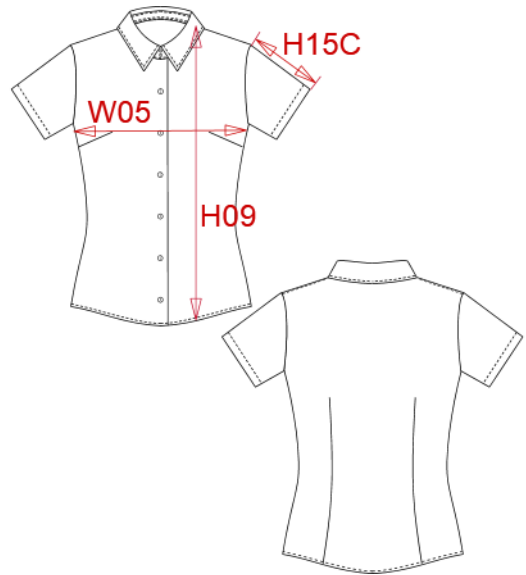
Main fabric : 140 gsm

**TECHNICAL DETAIL :**

Wrinkle free finish

**ARTICLE WEIGHT :**

200 gr/pc



DESCRIPTION
<b>Français :</b> Chemise femme manches courtes
<b>English :</b> Ladies short sleeve easy care oxford shirt
<b>Nederlands :</b> Dames blouse met korte mouwen
<b>Deutsch :</b> Pflegeleichte damen kurzarm oxford-bluse
<b>Español :</b> Camisa de manga corta para mujer
<b>Italiano :</b> Camicia oxford donna a maniche corte
<b>Português :</b> Camisa de senhora manga curta em oxford tratamento fácil

COLORS	PANTONE SERIGRAPHIE
White	White
Oxford silver	Based on 877C
Oxford blue	Based on 651C

MEASUREMENT									
Description	XS	S	M	L	XL	XXL	3XL	4XL	
<b>H09 (L)</b> Hauteur totale devant / Front total height	63	65	67	69	71	73	75	77	
<b>W05 (L)</b> 1/2 largeur poitrine à 1.5cm de l'emmanchure / 1/2 chest width at 1.5 cm below armhole	44	47	50	53	56	59	62	65	
<b>H15C (L)</b> Longueur manche courte / Short sleeve length	19	19,75	20,50	21,25	22	22,75	23,50	24,25	

CARE LABEL

PACKING	
Box	12 pcs / box XS => L:52cm W:34cm H:20cm GW:3.60kg NW:2.30kg S => L:52cm W:34cm H:20cm GW:3.70kg NW:2.40kg M => L:52cm W:34cm H:20cm GW:3.80kg NW:2.50kg L => L:52cm W:34cm H:20cm GW:3.90kg NW:2.60kg XL => L:52cm W:34cm H:20cm GW:4.00kg NW:2.70kg XXL => L:52cm W:34cm H:20cm GW:4.10kg NW:2.70kg 3XL => L:52cm W:34cm H:20cm GW:4.20kg NW:2.80kg 4XL => L:52cm W:34cm H:20cm GW:4.30kg NW:2.90kg