

KARIBAN

REFERENCE : K542

SIZES : XS_S_M_L_XL_XXL_3XL_4XL

COMPOSITION :

Main fabric : Cotton poplin - 125 For colors 100%cotton

WEIGHT :

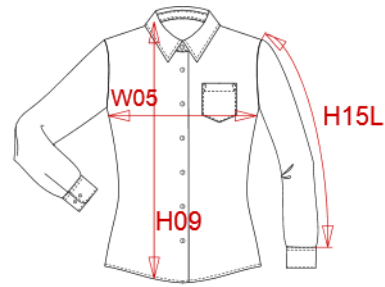
Main fabric : 125 gsm

TECHNICAL DETAIL :

Easy care

ARTICLE WEIGHT :

230 gr/pc



| DESCRIPTION |
|---|
| Français : Chemise femme manches longues |
| English : Ladies long sleeve easy care cotton poplin shirt |
| Nederlands : Dames blouse met lange mouwen |
| Deutsch : Pflegeleichte baumwolle popeline damen langarm bluse |
| Español : Camisa de manga larga para mujer |
| Italiano : Camicia donna maniche lunghe popeline |
| Português : Camisa de senhora de manga comprida em popeline |

| COLORS | PANTONE SERIGRAPHIE |
|-------------|------------------------|
| White | White |
| Black | Black |
| Navy | 433C |
| Classic red | 1945C |
| Zinc | 447C |
| Bright sky | 2708C |

| MEASUREMENT | | | | | | | | | |
|---|-------|-------|-------|-------|-------|-------|-------|-------|--|
| Description | XS | S | M | L | XL | XXL | 3XL | 4XL | |
| H09 (L) Hauteur totale devant / Front total height | 62,80 | 64,80 | 66,80 | 68,80 | 70,80 | 72,80 | 74,80 | 76,80 | |
| W05 (L) 1/2 largeur poitrine à 1.5cm de l'emmanchure / 1/2 chest width at 1.5 cm below armhole | 44 | 47 | 50 | 53 | 56 | 59 | 62 | 65 | |
| H15L (L) Longueur manche longue / Long sleeve length | 54 | 55 | 56 | 57 | 58 | 59 | 60 | 61 | |
| H32 (L) Hauteur poche devant / Front pocket height | 12 | 12 | 12 | 13 | 13 | 13 | 14 | 14 | |
| W32 (L) Largeur poche devant / Front pocket width | 10 | 10 | 10 | 11 | 11 | 11 | 12 | 12 | |

| CARE LABEL |
|------------|
| |

| PACKING | |
|---------|--|
| Box | 12 pcs / box XS => L:52cm W:34cm H:20cm GW:3.60kg NW:2.30kg S => L:52cm W:34cm H:20cm GW:3.70kg NW:2.40kg M => L:52cm W:34cm H:20cm GW:3.80kg NW:2.50kg L => L:52cm W:34cm H:20cm GW:3.90kg NW:2.60kg XL => L:52cm W:34cm H:20cm GW:4.00kg NW:2.70kg XXL => L:52cm W:34cm H:20cm GW:4.10kg NW:2.70kg 3XL => L:52cm W:34cm H:20cm GW:4.20kg NW:2.80kg 4XL => L:52cm W:34cm H:20cm GW:4.30kg NW:2.90kg |