

KARIBAN

REFERENCE : K6138

SIZES : S_M_L_XL_XXL_3XL

COMPOSITION :

Main fabric : Rinse Cotton / Elastane denim 99/1 - 11.50 OZ
99%cotton / 1%elastane

Lining : Polyester sherpa - 270 For body lining 100%polyester
Lining 2 : Polyester taffeta 210T - 60 For sleeve lining 100%
polyester

Wad 1 : Polyester polyfil - 90 For sleeve lining 100%polyester

WEIGHT :

Main fabric : 390 gsm

Lining : 270 gsm

Lining 2 : 60 gsm

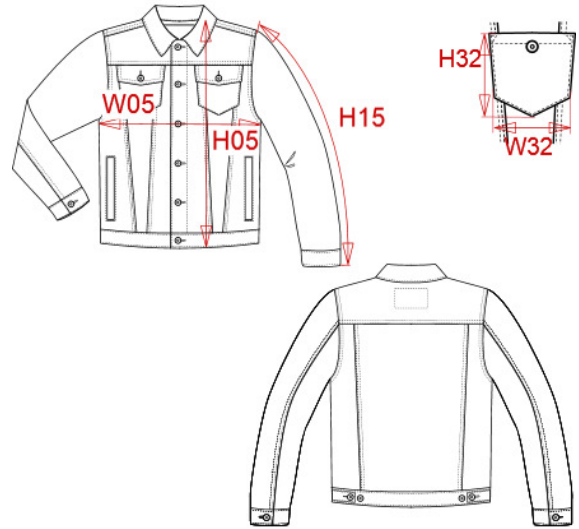
Wad 1 : 90 gsm

TECHNICAL DETAIL :

Rinse

ARTICLE WEIGHT :

1157 gr/pc



DESCRIPTION
Français : Veste denim doublée sherpa homme
English : Men's sherpa-lined denim jacket
Nederlands : Herenjas van denim met sherpavoering
Deutsch : Herren-Jeansjacke mit Sherpa-Futter
Español : Cazadora vaquera forro sherpa de hombre
Italiano : Giacca denim foderata in sherpa uomo
Português : Blusão de ganga de homem com forro em sherpa

COLORS	PANTONE SERIGRAPHIE
Blue rinse	-

MEASUREMENT						
Description	S	M	L	XL	XXL	3XL
H05 (M) Hauteur totale / Total height	62,50	64,50	66,50	68,50	70,50	72,50
W05 (M) 1/2 largeur poitrine à 1.5cm de l'emmanchure / 1/2 chest width at 1.5cm below armhole	53	56	59	62	65	68
H15L (M) Longueur manche longue / Long sleeve length	66	67	68	69	70	71
H32 (M) Hauteur poche devant / Front pocket height	11	11,50	12	12,50	13	13,50
W32 (M) Largeur poche devant / Front pocket width	10,50	11	11,50	12	12,50	13

CARE LABEL

PACKING	
Box	10 pcs / box S => L:58cm W:38cm H:32cm GW:11.85kg NW:10.63kg M => L:58cm W:38cm H:32cm GW:12.42kg NW:11.20kg L => L:58cm W:38cm H:32cm GW:13.08kg NW:11.86kg XL => L:58cm W:38cm H:35cm GW:13.82kg NW:12.52kg XXL => L:58cm W:38cm H:35cm GW:14.24kg NW:12.94kg 3XL => L:58cm W:38cm H:35cm GW:14.86kg NW:13.56kg