

PROACT.®

REFERENCE : PA448

SIZES : XS_S_M_L_XL_XXL

COMPOSITION :

Main fabric : Polyester mini mesh - 155 100%polyester
 Main fabric : Polyester mini mesh - 155 For contrasted yokes and inner collar 100%polyester

WEIGHT :

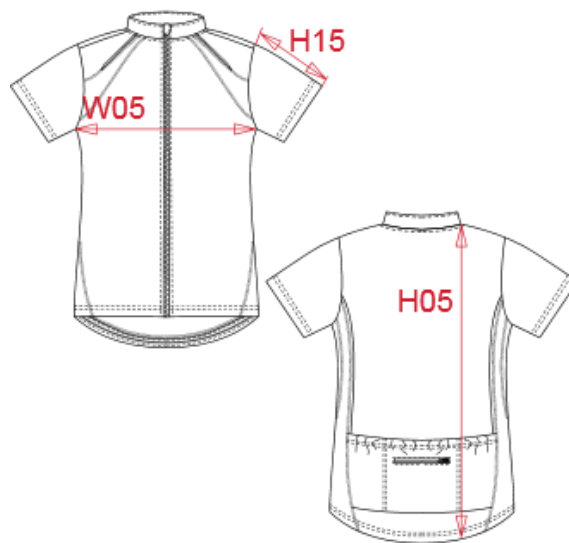
Main fabric : 155 gsm
 Main fabric : 155 gsm

FABRIC CONSTRUCTION AND FINISHING :

Quick dry fabric

ARTICLE WEIGHT :

170 gr/pc



DESCRIPTION	
Français :	Maillot cycliste manches courtes femme
English :	Ladies' short sleeve bikewear top
Nederlands :	Dames fiets shirt korte mouwen
Deutsch :	DAMEN KURZARM FAHRADSHIRT
Español :	Camiseta ciclismo de manga corta para mujer
Italiano :	MAGLIA CICLISMO MANICHE CORTE DONNA
Português :	T-shirt de ciclismo de manga curta de senhora

COLORS	PANTONE SERIGRAPHIE
Fluorescent yellow / Black	- / Black
Black / White	Black / White
White / Orange	White / 1585C

MEASUREMENT							
Description	XS	S	M	L	XL	XXL	
W05 1/2 largeur poitrine / 1/2 chest width	43	45	47	49	51	54	
H15 Longueur manche / Sleeve length	13,75	14,75	15,75	16,75	17,75	19,25	
H05 Hauteur totale dos/ Back total height	69,75	71,25	72,75	74,25	75,75	78	

CARE LABEL				

PACKING	
Box	50pcs / box All sizes => L:59cm W:37cm H:24cm GW:11.00kg NW:10.00kg