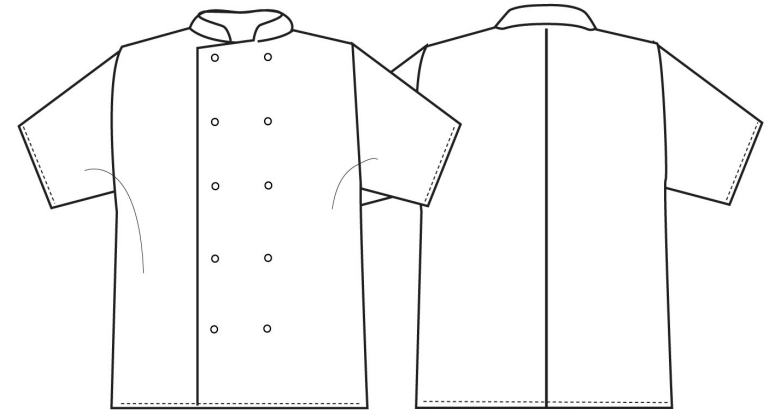


**PR664****STUDED FRONT SHORT SLEEVE CHEF'S JACKET**

CARTON	PACK	NO. SKU'S
24	6	14



Colour	Pantone	C	M	Y	K
Black	Black	0	0	0	100
White	0	0	0	0	0

**Fabric**

65% Polyester, 35% Cotton Twill, 195gsm

**Colours**

White, Black

**Sizes**

XS, S, M, L, XL, 2XL, 3XL

**Features**

- Soft hand feel
- Specifically engineered for user comfort
- Mandarin Collar stand with topstitching
- Press studs
- Unisex styling

**Country of Origin**

China &amp; Bangladesh

**Carton Dimensions**

60cm x 40cm x 22cm

**Carton Weight**

10kg approx.

**VAT Code**

6211 33 1000

<b>Call size</b>	XS	S	M	L	XL	2XL	3XL
<b>Chest to fit "</b>	30	34	38	42	46	50	52
<b>Chest to fit cm</b>	77	87	96	107	117	126	132
<b>Chest actual cm</b>	92	100	108	116	124	132	140
<b>DE,NL</b>	44	46	48	52	56	58	60
<b>FR,ES,PT</b>	40	42	44	46	48	50	52
<b>Back length cm</b>	76	76	76	76	76	76	76

**Marketing Description**

An easy-wearing short sleeve chef jacket with ten metal press studs in a popular wrap over style. Features a Mandarin Collar with top stitching and is available in Black or White.



INDUSTRIAL LAUNDERING 85°C MAXIMUM